

LK11 系列 I. 单节键槽联接膜片联轴器

LK11 Series I. Keyway Type (Single Plate Springs)

特点 Features

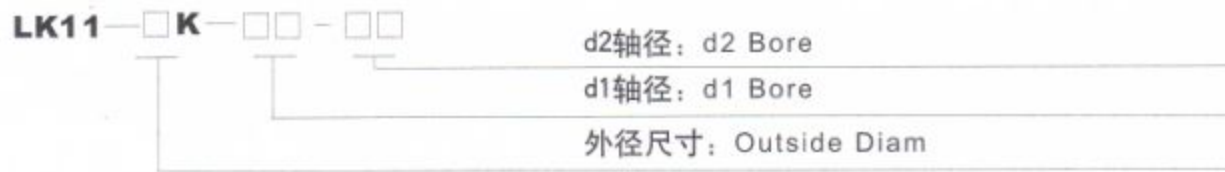
- 利用键槽联接的膜片型联轴器
 - 零回转间隙，拆装方便
 - 高灵敏度，传递力矩大
 - 顺时针与逆时针回转特性完全相同
 - 不锈钢膜片补偿径向、角向和轴向偏差
 - 常用于伺服电机、步进电机联接
- Using keyway connect , plate springs coupling
 - Zero backlash
 - Excellent response and high torque capacity
 - Identical clockwise and anticlockwise rotational characteristics
 - Stainless steel plate springs absorb parallel, angular misalignments and shaft end-play
 - For servomotor, stepmotor connect



主体：铁合金材料

Body: Steel

选型举例：Ordering Information

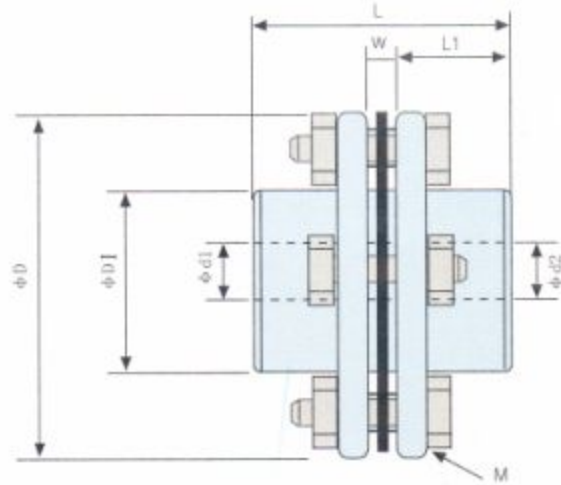


例：LK11-56K-1410

LK11: 系列号，材料为铁合金
 56K: 外径尺寸：56mm, 键槽联接
 14: d1轴径为：14mm
 10: d2轴径为：10mm

Example: LK11-56K-1410

LK11: Series NO, Material : Steel
 56K: Outside Diam : 56mm, Keyway Type
 14: d1 Bore : 14mm
 10: d2 Bore : 10mm



外型尺寸 Dimensions

单位 (unit): mm

型号 Model	Ød1 Ød2 轴径 Bore	ØD	ØD1	L	L1	W	M
LK11-56K-□□□□	8 10 11 12 14 16 18 19 20	56	32	45	20	5	M5
LK11-68K-□□□□	11 14 16 18 19 20 22 24 25	68	40	56	25	6	M6

外型尺寸 Dimensions

单位 (unit): mm

型号 Model	Ød1 Ød2 轴 径 Bore	ØD	ØD1	L	L1	W	M
LK11-82K-□□□□	14 16 18 19 20 24 25 28 30 35	82	54	66	30	6	M6
LK11-94K-□□□□	14 16 18 19 20 24 25 28 30 35 38	94	58	68	30	8	M8
LK11-104K-□□□□	19 22 24 25 30 35 38 40 42	104	68	80	35	10	M8
LK11-126K-□□□□	22 24 30 35 38 40 42 45 50	126	78	91	40	11	M10
LK11-144K-□□□□	30 34 37 40 45 50 55 60	144	88	102	45	12	M12
LK11-152K-□□□□	45 50 52 55 60 65 70 75	152	104	102	45	12	M8
LK11-178K-□□□□	48 50 55 60 65 70 75 80	178	118	124	55	14	M10
LK11-190K-□□□□	60 65 70 75 80 85	190	126	145	65	15	M12
LK11-210K-□□□□	65 70 75 80 85 90	210	130	165	75	15	M16
LK11-225K-□□□□	70 75 80 85 90 100	225	144	200	90	20	M16
LK11-262K-□□□□	80 85 90 100 105 115	262	166	223	100	23	M20

技术参数 Specifications

型号 Model	额定扭矩 Rated Torque (N.m)	最大扭矩 Max. Torque (N.m)	最高转速 Max. Rotational Frequency (rpm)	惯性力矩 Moment of Inertia (kg·m ²)	静态扭矩刚性 Static Torsional Stiffness (N.m/rad)	径向偏差 Errors of Eccentricity (mm)	角向偏差 Errors of Angularity (°)	轴向偏差 Errors of Shaft End-play (mm)	重量 Mass (g)
LK11-56K-□□□□	25	50	20000	0.1X10 ⁻³	15X10 ³	0.02	1	±0.3	300
LK11-68K-□□□□	55	110	15000	0.28X10 ⁻³	28X10 ³	0.02	1	±0.3	500
LK11-82K-□□□□	80	160	14000	0.85X10 ⁻³	81X10 ³	0.02	1	±0.3	1000
LK11-94K-□□□□	170	340	11000	1.5X10 ⁻³	165X10 ³	0.02	1	±0.3	1400
LK11-104K-□□□□	240	480	9800	2.4X10 ⁻³	240X10 ³	0.02	1	±0.4	2100

技术参数 Specifications

型号 Model	额定扭矩 Rated Torque (N.m)	最大扭矩 Max. Torque (N.m)	最高转速 Max. Rotational Frequency (rpm)	惯性力矩 Moment of Inertia (kg · m ²)	静态扭矩刚性 Static Torsional Stiffness (N.m/ rad)	径向偏差 Errors of Eccentricity (mm)	角向偏差 Errors of Angularity (°)	轴向偏差 Errors of Shaft End-play (mm)	重量 Mass (g)
LK11-126K-□□□□	420	840	8000	6.3X10 ⁻³	410X10 ³	0.02	1	±0.4	3400
LK11-144K-□□□□	700	1400	6800	9.2X10 ⁻³	760X10 ³	0.02	1	±0.4	4900
LK11-152K-□□□□	800	1600	5800	11.0X10 ⁻³	836X10 ³	0.03	1	±0.4	5300
LK11-178K-□□□□	1300	2600	5100	27.9X10 ⁻³	1065X10 ³	0.03	1	±0.5	7150
LK11-190K-□□□□	2000	4000	4700	45.8X10 ⁻³	1150X10 ³	0.03	1	±0.5	12000
LK11-210K-□□□□	3900	7600	4300	73.8X10 ⁻³	1520X10 ³	0.03	1	±0.6	14500
LK11-225K-□□□□	4900	9800	4000	114X10 ⁻³	1930X10 ³	0.03	1	±0.6	18200
LK11-262K-□□□□	7900	15800	3400	266X10 ⁻³	3500X10 ³	0.03	1	±0.7	30000

说明：惯性力矩和重量按最大孔径计算。

Moment of inertia and mass figures based on the maximum shaft bores

LK11 系列 II. 多节键槽联接膜片联轴器

LK11 Series II. Keyway Type (Double Plate Springs)

特点 Features

- 利用键槽联接的膜片型联轴器
- 零回转间隙，拆装方便
- 高灵敏度，传递力矩大
- 顺时针与逆时针回转特性完全相同
- 不锈钢膜片补偿径向、角向和轴向偏差
- 常用于伺服电机、步进电机联接
- Using keyway connect, plate springs coupling
- Zero backlash
- Excellent response and high torque capacity
- Identical clockwise and anticlockwise rotational characteristics
- Stainless steel plate springs absorb parallel, angular misalignments and shaft end-play
- For servomotor, stepmotor connect



主体：铁合金材料

Body: Steel

选型举例：Ordering Information

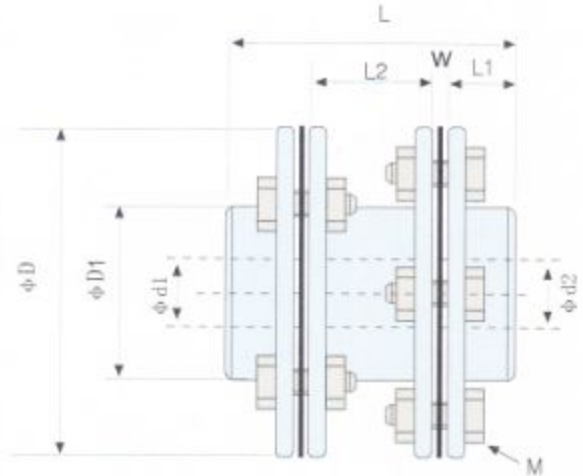


例：LK11-82K-1420WP

- LK11: 系列号, 材料为铁合金
- 82K: 外径尺寸: 82mm, 键槽联接
- 14: d1轴径为: 14mm
- 20: d2轴径为: 20mm

Example: LK11-82K-1420WP

- LK11: Series NO, Material :Steel
- 82K: Outside Diam :82mm, Keyway Type
- 14: d1 Bore :14mm
- 20: d2 Bore :20mm



外型尺寸 Dimensions

单位 (unit): mm

型号 Model	Ød1 Ød2 轴径 Bore	ØD	ØD1	L	L1	L2	W	M
LK11-56K-□□□□WP	8 10 11 12 14 16 18 19 20	56	32	74	20	24	5	M5
LK11-68K-□□□□WP	11 14 16 18 19 20 22 24 25	68	40	86	25	24	6	M6
LK11-82K-□□□□WP	14 16 18 19 20 24 25 28 30 35	82	54	98	30	26	6	M6
LK11-94K-□□□□WP	14 16 18 19 20 24 25 28 30 35 38	94	58	106	30	30	8	M8
LK11-104K-□□□□WP	19 22 24 25 30 35 38 40 42	104	68	120	35	30	10	M8
LK11-126K-□□□□WP	22 24 30 35 38 40 42 45 50	126	78	140	40	38	11	M10
LK11-144K-□□□□WP	30 35 38 40 45 50 55 60	144	88	160	45	46	12	M12
LK11-152K-□□□□WP	45 50 52 50 60 65 70 75	152	104	184	45	70	12	M8
LK11-178K-□□□□WP	48 50 55 60 65 70 75 80	178	118	218	55	80	14	M10
LK11-190K-□□□□WP	60 65 70 75 80 85	190	126	260	65	100	15	M12
LK11-210K-□□□□WP	65 70 75 80 85 90	210	130	290	75	110	15	M16
LK11-225K-□□□□WP	70 75 80 85 90 100	225	144	335	90	115	20	M16
LK11-262K-□□□□WP	80 85 90 100 105 115	262	166	391	100	145	23	M20

技术参数 Specifications

型号 Model	额定扭矩 Rated Torque (N.m)	最大扭矩 Max. Torque (N.m)	最高转速 Max. Rotational Frequency (rpm)	惯性力矩 Moment of inertia (kg · m ²)	静态扭矩刚性 Static Torsional Stiffness (N.m / rad)	径向偏差 Errors of Eccentricity (mm)	角向偏差 Errors of Angularity (°)	轴向偏差 Errors of Shaft End-play (mm)	重量 Mass (g)
LK11-56K-□□□□ WP	25	50	15000	0.19X10 ⁻³	7.5X10 ³	0.04	1.5	±0.6	500
LK11-68K-□□□□ WP	55	110	14000	0.54X10 ⁻³	13X10 ³	0.04	1.5	±0.6	900
LK11-82K-□□□□ WP	80	160	11000	1.6X10 ⁻³	39X10 ³	0.04	1.5	±0.6	1700
LK11-94K-□□□□ WP	170	340	9500	2.8X10 ⁻³	78X10 ³	0.04	1.5	±0.6	2400
LK11-104K-□□□□ WP	240	480	8800	4.6X10 ⁻³	115X10 ³	0.04	1.5	±0.6	3300
LK11-126K-□□□□ WP	420	840	6800	11.9X10 ⁻³	200X10 ³	0.04	1.5	±0.8	5800
LK11-144K-□□□□ WP	700	1400	6000	18.2X10 ⁻³	350X10 ³	0.04	1.5	±0.8	8600
LK11-152K-□□□□ WP	800	1600	5800	21.5X10 ⁻³	750X10 ³	0.06	2	±0.8	7600
LK11-178K-□□□□ WP	1300	2600	5100	46.5X10 ⁻³	1420X10 ³	0.06	2	±1.0	11000
LK11-190K-□□□□ WP	2000	4000	4700	76.3X10 ⁻³	1690X10 ³	0.06	2	±1.0	16000
LK11-210K-□□□□ WP	3900	7600	4300	122 X10 ⁻³	2340X10 ³	0.06	2	±1.2	22000
LK11-225K-□□□□ WP	4900	9800	4000	175 X10 ⁻³	2970X10 ³	0.06	2	±1.2	28000
LK11-262K-□□□□ WP	7900	15800	3400	410 X10 ⁻³	5390X10 ³	0.06	2	±1.4	46000

说明：惯性力矩和重量按最大孔径计算。

Moment of inertia and mass figures based on the maximum shaft bores

LK12 系列 编码器联轴器

LK12 Series Encode Coupling

特点 Features

- 材料选用玻璃纤维，柔性好
- 适用于编码器联接
- Polyester resin with glass fibars
- For encode



LK12-13, LK12-15



LK12-25

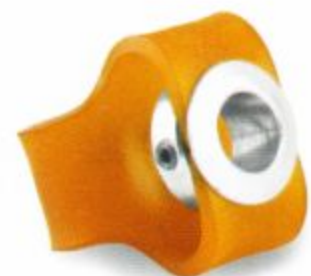
选型举例：Ordering Information

LK12 — □ - □□ - □□

d2轴径：d2 Bore

d1轴径：d1 Bore

外径尺寸：Outside Diam



LK12-42